



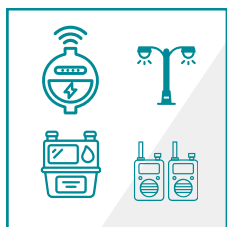
Pyxis LTE Router



About

Ruggedized to meet utility requirements, the Pyxis LTE brings resilient LTE-M connectivity right to the edge of the grid. Supporting a range of utility applications such as SCADA, DER integration and Distribution Automation, Pyxis LTE is the ideal endpoint for existing pLTE networks, or Ubiik's freeRAN™ and goRAN™ pLTE systems. The Pyxis LTE operates in a range of frequency bands across both private and public LTE networks. With its powerful Qualcomm System-on-Chip facilitating formidable edge computing capability and enhanced security features, the Pyxis LTE is the ultimate choice for future-proof utility networks.

End Terminals



Pyxis LTE



private or public LTE



freeRAN™
LTE Base Station

for license-free spectrum

goRAN™
LTE Base Station

for licensed bands

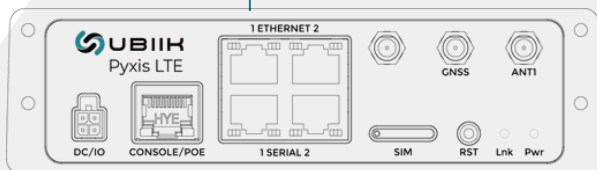


Built-in EPC



External EPC

S1



Contact Us



info@ubiik.com



Features

- Incorporates Qualcomm's System-on-Chip IPQ5018, which includes a dual-core ARM Cortex® A53 CPU, bringing higher security, edge computing capability and lower power consumption.
- Ideal solution for connectivity to capacitor banks, reclosers, switches and a range of DA and DER grid assets.
- Band 106 model supports high output power (28 dBm) in B106 LTE-M thanks to Ubiik's breakthrough Maverick 220 high power LTE-M module.

Specifications

Standard	LTE-M	
Platform	Dual-core ARM 64-bit A53 @ 1.0GHz Processor 8GB eMMC + 512MB DRAM	
Frequency Band	ISM-FDD (DL: 925-928 MHz, UL: 902-915 MHz) ISM-TDD (DL/UL 902-928 MHz) B55 (DL/UL: 1800-1830 MHz) B107 (DL: 1820-1830 MHz, UL: 1800-1810 MHz) B20 (DL: 791-821 MHz, UL: 832- 862 MHz) B87 (DL: 420-425 MHz, UL: 410-415 MHz) B88 (DL: 422-427 MHz, UL: 412-417 MHz)	B31 (DL: 462.5-467.5 MHz, UL: 452.5-457.5 MHz) B72 (DL: 461-466 MHz, UL: 451-456 MHz)
Tx Power	23 dBm maximum	26 dBm maximum
Modulation	QPSK, 16QAM	
Power Supply	PoE IEEE 802.3 AF/AT 9-60 V (nominal 12V)	
Antenna Connections	1 x SMA connector: LTE-M 1 x GNSS 1 x SMA connector: (reserved)	
Indicators	1 x LED for system power 1 x LED for network connection status	
Interfaces	2 x Ethernet -10/100 Base-T (RJ45 connectors) 2 x RS232/485 (RJ45 connectors) 1 x Console Port or 802.3 at PoE (RJ45) GPIO (2 pins) DC_In (2 pins) 1 x Nano SIM 1 x Reset Button	
Physical and environmental	Dimensions (LxWxH): 5" x 6" x 1.75" (127 x 150 x 44 mm) Weight: 1.70 lbs (770g) (TBC) Operating Temperature: -40°F to +149°F (-40°C to +65°C) Storage Temperature: -40°F to +185°F (-40°C to +85°C) Humidity: 5% to 90% non-condensing	



Scan for more info

ubiik.com